



Raychem CSJA

In-line Cold Shrinkable Joints for 1/C Shielded Power Cables (15-35 kV)

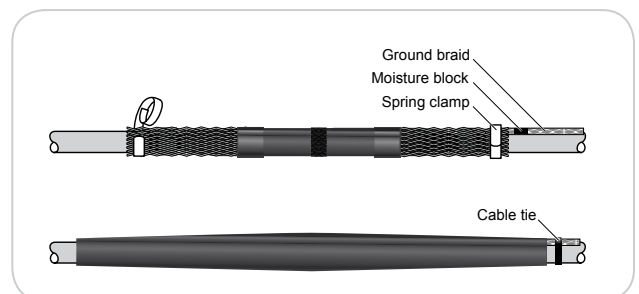
KEY FEATURES

- This cable joint has a pre-expanded EPDM re-jacketing sleeve and an integrated neutral sock. The “All-in-One” design is easy to install with minimal steps and short installation time.
- A pre-expanded, single-piece silicone rubber joint body with high mechanical expansion capability allows a wide application range.
- An ergonomically designed spiral holdout provides a smooth installation with low release forces.
- Total length of the splice body on the holdout is 14 to 19 inches providing a compact design.

TE Connectivity’s “All-in-One” CSJA cold shrinkable joint for 15 kV through 35 kV is designed to splice tape shield, wire shield, LC shield, UniShield, JCN and flat strap shielded cables.

Additional Features

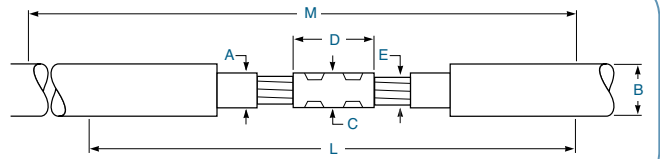
- The silicone rubber body provides high dielectric strength, high tear strength, low tension set, and excellent low temperature recovery.
- Integrated electrical stress control enhanced by factory molded stress cones and a Faraday cage.
- Void filling stress relief mastics are not necessary.
- Proven shield continuity concept which can also bridge concentric neutrals.
- The joint accepts both mechanical and compression connectors.



Raychem
from TE Connectivity

- When a ShearBolt connector is used, this is a totally crimpless system.
- Meets IEEE-404 requirements for 15 kV through 35 kV.

- Each silicone splice body is factory tested to include AC withstand and partial discharge in accordance with IEEE-404 production tests.



Product Selection Information: Dimensions in inches (millimeters)									
Voltage Class	Catalog Number	Nominal Cable Range	Min/Max Insulation OD	Max Jacket OD	Neutral Sock (AWG)	Connector Dimensions		Kit Installed Length	Required Installation Space
						Max. OD	Max. Length		
			A	B		C	D	L	M
CSJA Joint without Connector									
15 kV	CSJA-1521	#2 - 350	0.69 - 1.20 (17.5 - 30.5)	1.50 (38.1)	1/0	1.30 (33.0)	5.50 (140.0)	29 (737)	39 (990)
15 kV	CSJA-1522	4/0 - 750	0.87 - 1.40 (22.1 - 35.6)	1.80 (46.0)	1/0	1.50 (38.0)	5.50 (140.0)	29 (737)	39 (990)
15 kV	CSJA-1523	350 - 1000	1.03 - 1.58 (26.2 - 40.0)	2.05 (52.1)	2/0	1.65 (42.0)	6.69 (170.0)	33 (838)	43 (1090)
15 kV	CSJA-1524	750 - 1250	1.28 - 2.05 (32.50 - 52.0)	2.60 (66.0)	2/0	1.85 (47.0)	7.90 (200.0)	37 (939)	49 (1244)
28 kV	CSJA-2822	#1 - 500	0.87 - 1.40 (22.1 - 35.6)	1.80 (46.0)	1/0	1.50 (38.0)	5.50 (140.0)	29 (737)	39 (990)
28 kV	CSJA-2823	4/0 - 750	1.03 - 1.58 (26.20 - 40.0)	2.05 (52.1)	2/0	1.65 (42.0)	6.69 (170.0)	33 (838)	43 (1090)
28 kV	CSJA-2824	500 - 1250	1.28 - 2.05 (32.50 - 52.0)	2.60 (66.0)	2/0	1.85 (47.0)	7.90 (200.0)	37 (939)	49 (1244)
35 kV	CSJA-3523	1/0 - 350	1.03 - 1.49 (26.20 - 37.8)	2.05 (52.1)	2/0	1.40 (35.6)	5.50 (140.0)	33 (838)	43 (1090)
35 kV	CSJA-3524	350 - 1000	1.36 - 2.05 (34.54 - 52.0)	2.60 (66.0)	2/0	1.96 (50.0)	7.90 (200.0)	37 (939)	49 (1244)
35 kV	CSJA-3525	750 - 1250	1.63 - 2.36 (41.40 - 60.0)	2.60 (66.0)	2/0	2.36 (60.0)	7.90 (200.0)	37 (939)	49 (1244)

Voltage Class	Catalog Number	Nominal Cable Range	Min/Max Insulation OD	Max Jacket OD	Neutral Sock (AWG)	Min/Max Diameter Over Cable Conductor*	Kit Installed Length	Required Installation Space
CSJA Joint with Copper Mechanical ShearBolt Connector								
15 kV	CSJA-1521M1	2/0 - 350	0.69 - 1.20 (17.5 - 30.5)	1.50 (38.1)	1/0	0.376 - 0.736 (9.50 - 18.7)	29 (737)	39 (990)
15 kV	CSJA-1522M1	4/0 - 500	0.87 - 1.40 (22.1 - 35.6)	1.80 (46.0)	1/0	0.376 - 0.736 (9.50 - 18.7)	29 (737)	39 (990)
15 kV	CSJA-1522M2	350 - 750	0.87 - 1.40 (22.1 - 35.6)	1.80 (46.0)	1/0	0.570 - 0.945 (14.5 - 24.0)	29 (737)	39 (990)
15 kV	CSJA-1523M2	350 - 750	1.03 - 1.58 (26.2 - 40.0)	2.05 (52.1)	2/0	0.570 - 0.945 (14.5 - 24.0)	33 (838)	43 (1090)
28 kV	CSJA-2822M1	2/0 - 500	0.87 - 1.40 (22.1 - 35.6)	1.80 (46.0)	1/0	0.376 - 0.736 (9.50 - 18.7)	29 (737)	39 (990)
28 kV	CSJA-2823M2	350 - 750	1.03 - 1.58 (26.2 - 40.0)	2.05 (52.1)	2/0	0.570 - 0.945 (14.5 - 24.0)	33 (838)	43 (1090)
28 kV	CSJA-2824M2	500 - 750	1.28 - 2.05 (32.50 - 52.0)	2.60 (66.0)	2/0	0.570 - 0.945 (14.5 - 24.0)	37 (939)	49 (1244)
35 kV	CSJA-3523M1	2/0 - 350	1.03 - 1.49 (26.20 - 37.8)	2.05 (52.1)	2/0	0.376 - 0.736 (9.50 - 18.7)	33 (838)	43 (1090)
35 kV	CSJA-3524M2	350 - 750	1.36 - 2.05 (34.54 - 52.0)	2.60 (66.0)	2/0	0.570 - 0.945 (14.5 - 24.0)	37 (939)	49 (1244)

* Min/max diameter over cable conductor accepted by the copper mechanical connector.

Voltage Class	Catalog Number	Nominal Cable Range	Min/Max Insulation OD	Max Jacket OD	Neutral Sock (AWG)	Min/Max Diameter Over Cable Conductor*	Kit Installed Length	Required Installation Space
CSJA Joint with Aluminum Mechanical ShearBolt Connector								
15 kV	CSJA-1521M4	#2 - 3/0	0.69 - 1.20 (17.5 - 30.5)	1.50 (38.1)	1/0	0.268 - 0.470 (6.80 - 11.9)	29 (737)	39 (990)
15 kV	CSJA-1521M5	#2 - 350	0.69 - 1.20 (17.5 - 30.5)	1.50 (38.1)	1/0	0.268 - 0.681 (6.80 - 17.3)	29 (737)	39 (990)
15 kV	CSJA-1522M6	4/0 - 500	0.87 - 1.40 (22.1 - 35.6)	1.80 (46.0)	1/0	0.423 - 0.813 (10.7 - 20.6)	29 (737)	39 (990)
15 kV	CSJA-1522M7	500 - 750	0.87 - 1.40 (22.1 - 35.6)	1.80 (46.0)	1/0	0.736 - 0.998 (18.7 - 25.3)	29 (737)	39 (990)
15 kV	CSJA-1523M8	350 - 750	1.03 - 1.58 (26.20 - 40.0)	2.05 (52.1)	2/0	0.616 - 0.998 (15.7 - 25.3)	33 (838)	43 (1090)
15 kV	CSJA-1524M9	750 - 1000	1.28 - 2.05 (32.50 - 52.0)	2.60 (66.0)	2/0	0.813 - 1.152 (20.6 - 29.2)	37 (939)	49 (1244)
28 kV	CSJA-2822M5	#1 - 350	0.87 - 1.40 (22.1 - 35.6)	1.80 (46.0)	1/0	0.268 - 0.681 (6.80 - 17.3)	29 (737)	39 (990)
28 kV	CSJA-2822M6	4/0 - 500	0.87 - 1.40 (22.1 - 35.6)	1.80 (46.0)	1/0	0.423 - 0.813 (10.7 - 20.6)	29 (737)	39 (990)
28 kV	CSJA-2823M8	350 - 750	1.03 - 1.58 (26.20 - 40.0)	2.05 (52.1)	2/0	0.616 - 0.998 (15.7 - 25.3)	33 (838)	43 (1090)
28 kV	CSJA-2824M8	500 - 750	1.28 - 2.05 (32.50 - 52.0)	2.60 (66.0)	2/0	0.616 - 0.998 (15.7 - 25.3)	37 (939)	49 (1244)
28 kV	CSJA-2824M9	750 - 1000	1.28 - 2.05 (32.50 - 52.0)	2.60 (66.0)	2/0	0.813 - 1.152 (20.60 - 29.2)	37 (939)	49 (1244)
35 kV	CSJA-3523M5	1/0 - 350	1.03 - 1.49 (26.20 - 37.8)	2.05 (52.1)	2/0	0.268 - 0.681 (6.8 - 17.3)	33 (838)	43 (1090)
35 kV	CSJA-3524M8	350 - 750	1.36 - 2.05 (34.54 - 52.0)	2.60 (66.0)	2/0	0.616 - 0.998 (15.7 - 25.3)	37 (939)	49 (1244)
35 kV	CSJA-3524M9	750 - 1000	1.36 - 2.05 (34.54 - 52.0)	2.60 (66.0)	2/0	0.813 - 1.152 (20.60 - 29.2)	37 (939)	49 (1244)
35 kV	CSJA-3525M10	1000 - 1250	1.63 - 2.36 (41.40 - 60.0)	2.60 (66.0)	2/0	1.060 - 1.251 (23.0 - 31.7)	37 (939)	49 (1244)

* Min/max diameter over cable conductor accepted by the aluminum mechanical connector.

TE Technical Support Center

- USA: +1 (800) 327-6996
- Canada: +1 (905) 475-6222
- Mexico: +52 (0) 55-1106-0800
- Latin/S. America: +54 (0) 11-4733-2200
- UK: +44 (0) 800-267666
- France: +33 (0) 1-3420-8686
- Netherlands: +31 (0) 73-6246-999
- China: +86 (0) 400-820-6015

energy.te.com

Ordering Information

1. Selections are based on the typical dimensions of 100% insulated cables, manufactured in accordance with AEIC standard. Nominal insulation thickness (100%): 15 kV:175mils, 25 kV:260mils, 35 kV:345mils.
2. Select the appropriate catalog number. Use the insulation OD, and jacket OD range as the final ordering criteria.
3. For mechanical ShearBolt connector included in the kit confirm the correct connector selection according to the Min/Max diameter over the cable conductor from the tables.
4. If external grounding is required, order the CSJ-EG kit.
5. For other applications or if you have any questions, contact your TE representative.
6. Standard package: 1kit per box.
7. Related test reports: EDR-5430, EDR-5455, EDR-5513
8. For AL Mechanical ShearBolt connector information request datasheet 9-1773440-4 and for CU request 165972.

Cold-Applied External Grounding Kit		
Catalog Number	Length of Moisture Blocked Braid	Braid (AWG)
CSJ-EG-1	24 (610)	#8
CSJ-EG-2	24 (610)	#6
CSJ-EG-3	24 (610)	#4

