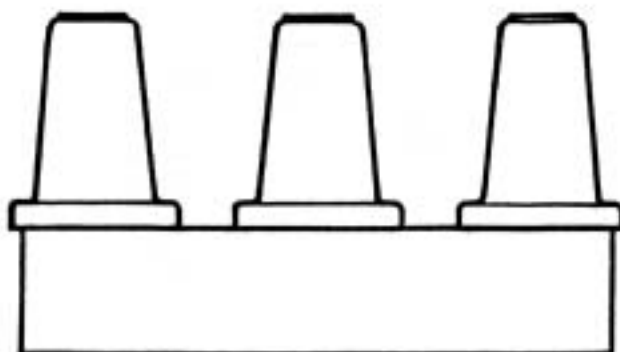


RTE 600 AMPERE DEADBREAK JUNCTION

15 & 25 kV and 35 kV Class Installation Instructions



15 & 25 kV 3-way junction shown



Deadbreak Junction Assembly Kit

- Deadbreak Junction
- Lubricant
- Instruction Sheet

WARNING: ALL ASSOCIATED APPARATUS MUST BE DE-ENERGIZED DURING INSTALLATION OR MAINTENANCE.

CAUTION: The 600 Ampere Deadbreak Junction is designed to be operated in accordance with normal safe operating procedures. These instructions are not intended to supersede or replace existing safety and operation procedures.

The junction should be installed and serviced only by personnel familiar with good safety practices and the handling of high-voltage electrical equipment.

NOTE: For product applications that require ratings or characteristics not shown in current publications, contact RTE for specific recommendations.

STEP 1 Install

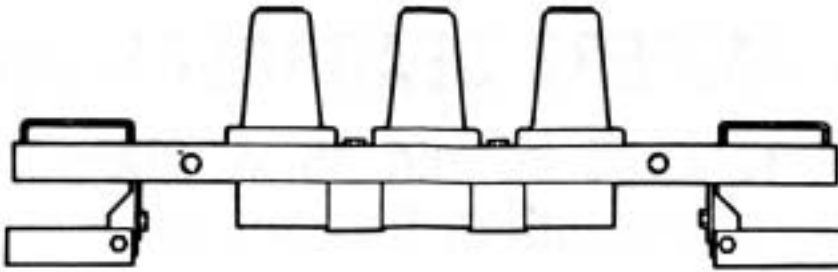
- Mount deadbreak junction solidly. The following tables provide mounting dimensions for RTE-supplied bracket. User-supplied mountings should be designed to prevent excessive stress while holding junction firmly.
- Connect junction bracket to system ground. (Be sure that the junction's external conducting shield surface is connected to the system ground.)

STEP 2 Clean and Lubricate

- Remove protective shipping caps.
- Clean and lubricate interfaces of deadbreak junction and mating apparatus.
- Use lubricant supplied or RTE approved equivalent.

STEP 3 Assemble

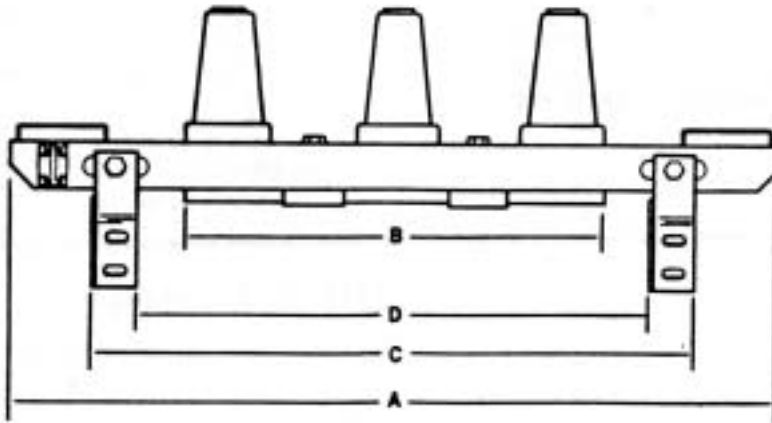
- Install cleaned and lubricated mating apparatus per instructions provided with product.
- All interfaces must be covered with mating apparatus.



15 & 25 kV Class Mounting Dimensions in./(mm)

Number of Interfaces	Configuration 1		Configuration 2		Configuration 3	
	Min.	Max.	Min.	Max.	Min.	Max.
2	14.7 (374)	18.1 (460)	11.2 (285)	14.7 (374)	7.5 (191)	11.2 (285)
3	19.3 (491)	23.0 (585)	15.8 (402)	19.3 (491)	12.0 (305)	15.8 (402)
4	24.8 (630)	28.1 (714)	21.3 (541)	24.8 (630)	17.5 (446)	21.3 (541)

1. Both feet turned out.
2. One foot turned out, the other in.
3. Both feet turned in.



35 kV Class Mounting Dimensions in./(mm)

Number of Interfaces	A	B	C	D
2	21.5 (546)	9.0 (229)	15.5 (394)	12.5 (318)
3	27.5 (699)	15.0 (381)	21.5 (546)	18.5 (470)
4	33.5 (851)	21.0 (534)	27.5 (699)	24.5 (623)

COOPER Power Systems

P.O. Box 1640
Waukesha, WI 53187
www.cooperpower.com