

Deadbreak Apparatus Connectors

600 A 35 kV Class PUSH-OP® Insulated Standoff Bushing

GENERAL

The Cooper Power Systems 600 A, 35 kV PUSH-OP® Insulated Standoff Bushing meets the full requirements of **IEEE Standard 386™** – Separable Insulated Connector Systems and provides a single deadbreak interface made of high quality insulating epoxy material.

It is used in switchgear, transformers, and other apparatus to isolate and sectionalize an energized cable. Temporary or permanent parking of energized 600 A 35 kV PUSH-OP Deadbreak Connectors is simplified with the use of an insulated standoff bushing.

The PUSH-OP Insulated Standoff Bushing is designed to be installed in the parking stand mounted on switchgear, transformers, or other apparatus. A drain wire lug is provided on the standoff bracket for attachment of a drain wire to ensure deadfront construction. The bushing provides a fully shielded, submersible connection for deadbreak operation.

All standoff bushing brackets have a stainless steel eyebolt with a brass pressure foot. The bushing body is bolted to a stainless steel base bracket using a stainless steel bolt. The bracket and latch mechanism provides easy installation of a PUSH-OP Connector without any threading operations. Optional hitch pin locks the latch mechanism in place for added security.

INSTALLATION

A hotstick tool is used to place the standoff bushing in the parking stand on the front plate of the apparatus. The PUSH-OP Connector is then installed onto the standoff bushing tap. Refer to Installation Instruction Sheet S600-65-1 for complete installation details on the PUSH-OP Insulated Standoff Bushing.



Figure 1.
PUSH-OP Insulated Standoff Bushing with bracket, latch mechanism, eyebolt, and optional hitch pin.

PRODUCTION TESTS

Tests conducted in accordance with **IEEE Standard 386™**:

- AC 60 Hz 1 Minute Withstand – 50 kV
- Minimum Corona Voltage Level – 26 kV

Tests conducted in accordance with Cooper Power Systems requirements:

- Physical Inspection
- Periodic X-ray Analysis

TABLE 1
Voltage Ratings and Characteristics – Insulated Standoff Bushing

Description	kV
Standard Voltage Class	35
Maximum Rating Phase-to-Ground	21.1
AC 60 Hz 1 Minute Withstand	50
DC 15 Minute Withstand	103
BIL and Full Wave Crest	150
Minimum Corona Voltage Level	26

Voltage ratings and characteristics are in accordance with **IEEE Standard 386™**.

ORDERING INFORMATION

To order a 35 kV Class Standoff Bushing Kit for PUSH-OP refer to Table 2.

TABLE 2
Standoff Bushing Kit

Description	Catalog Number
Insulated Standoff Bushing	PISB635
Insulated Standoff Bushing with hitch pin	PISB635HP

Each kit contains:

- Standoff Bushing with Bracket
- Shipping Cap (not for energized operation)
- Silicone Lubricant
- Installation Instruction Sheet

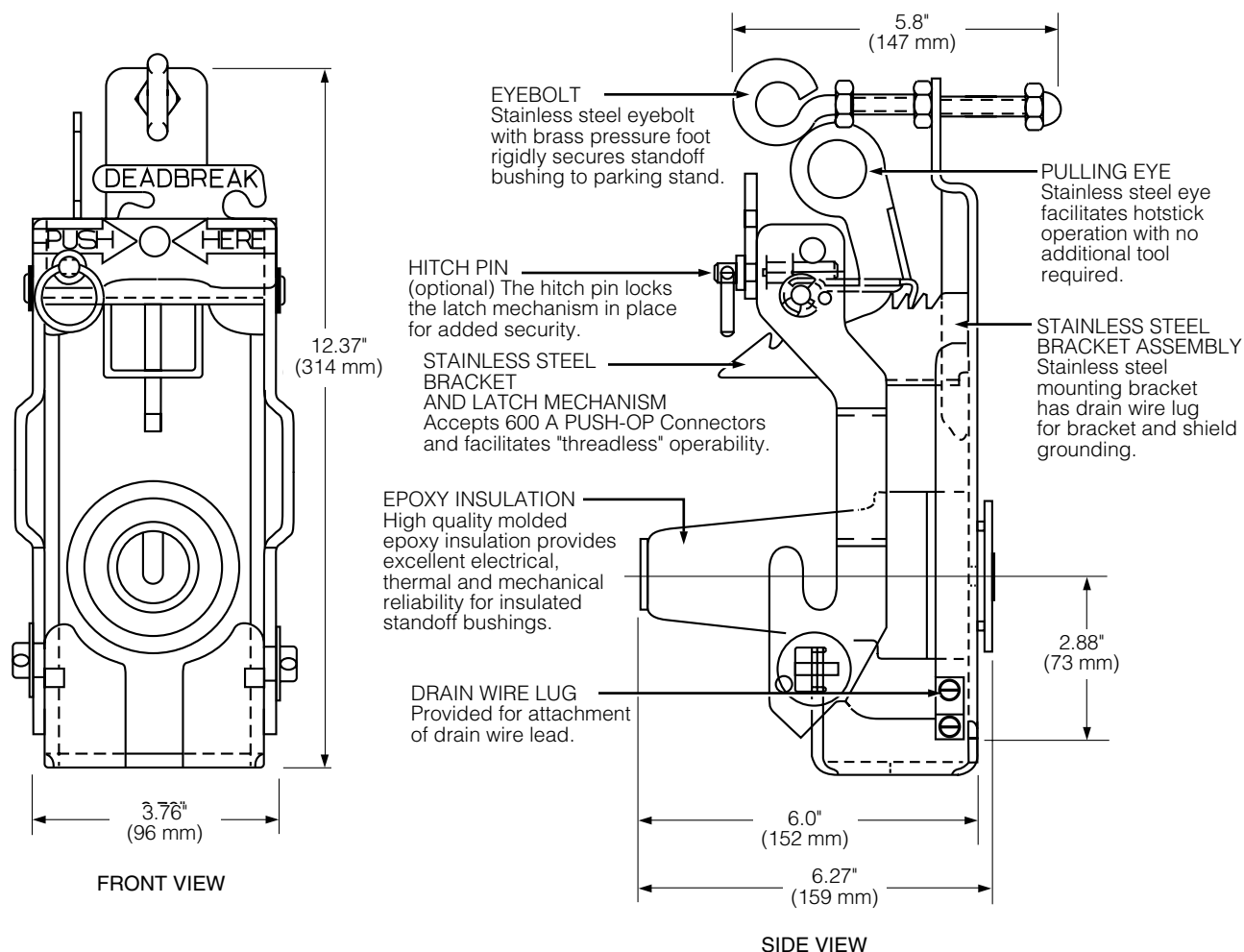


Figure 2.
Front view shows standoff bushing and latch mechanism. Side view shows standoff bushing and latch mechanism with bracket assembly.

Note: Dimensions given are for reference only.

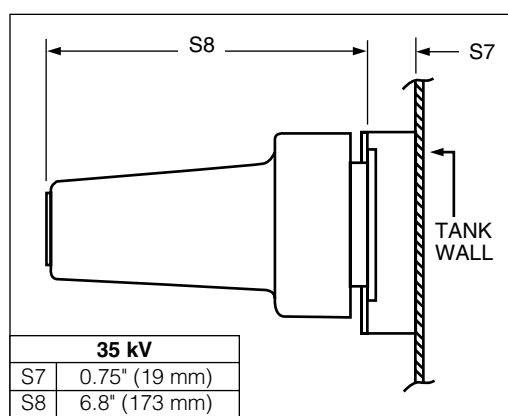


Figure 3.
PUSH-OP stacking dimensions.

ISO 9001:2000-Certified Quality Management System

COOPER Power Systems