

Looking for a separable connector?

We have a solution for that.

3M™ 35 kV Deadbreak Elbow 635E-Series System



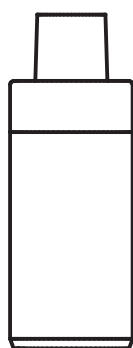
Benefits:

- More versatile than many standard splices or terminations
- Can accommodate multiple size variances for splices
- Can be used for above or underground applications
- Complies to IEEE 386

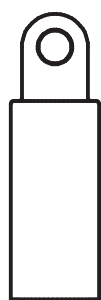
About the 3M™ Deadbreak Elbow 635-Series System

The 3M™ Deadbreak Elbow 635E-Series System provides an easy and reliable method of terminating and splicing main feeder circuits. The T-Body is fully shielded, molded rubber and has been designed and tested to meet the requirements of IEEE Std. 386 and IEEE Std. 592. This system is designed to terminate shielded power cables with aluminum or copper conductors ranging in size from #2 AWG to 1250 kcmil. It may be installed on any 600 A rated bushing apparatus that meets IEEE Std. 386, Interface 13.

Note: 3M™ 635E System includes 35 kV 600 A Elbow w/test point, stud, insulating plug with End cap.



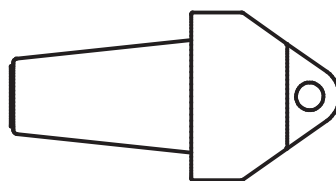
Cable Adapter



Crimp Connector



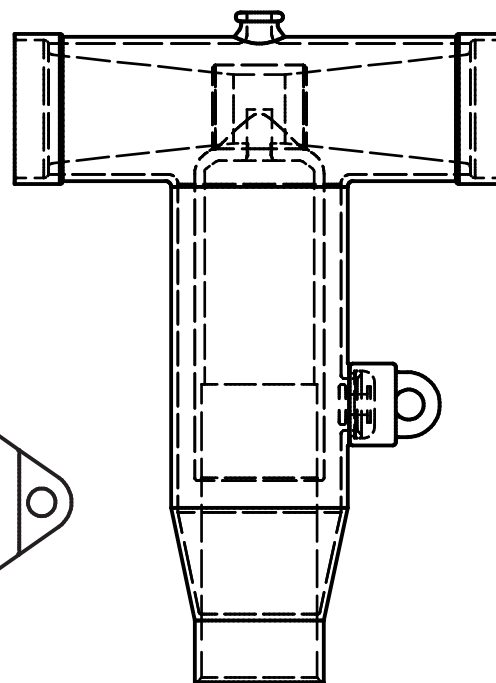
Shear Bolt Connector



Insulating Plug with End Cap



Stud



T-Body with Test-Point 635E

Compression Connector Information			Cable Adapters		
Stranded and Compressed	Compact and Solid	Compression Connector Code	Part#	Insulation Range (in.)	Insulation Range (mm)
#2	#1	22AL	635CAD	.750" - .985"	19.1 - 25.0
#1	1/0	23AL	635CAE	.930" - 1.040"	23.6 - 26.4
1/0	2/0	24AL	635CAF	.980" - 1.115"	24.90 - 28.3
2/0	3/0	25AL	635CAG	1.040" - 1.175"	26.40 - 29.9
3/0	4/0	26AL	635CAH	1.095" - 1.240"	27.8 - 31.5
4/0	250	27AL	635CAJ	1.160" - 1.305"	29.50 - 33.20
250	300	28AL	635CAK	1.220" - 1.375"	31.0 - 34.9
300	350	29AL	635CAL	1.285" - 1.395"	32.6 - 35.4
350	400	30AL	635CAM	1.355" - 1.520"	34.4 - 38.6
400	450/500	31AL	635CAN	1.485" - 1.595"	37.7 - 40.5
450	500/550	32AL	635CAP	1.530" - 1.640"	38.9 - 41.7
500	600	33AL	635CAQ	1.575" - 1.685"	40.0 - 42.8
550	650	34AL	635CAR	1.665" - 1.785"	42.3 - 45.3
600	700	35AL	635CAS	1.755" - 1.875"	44.6 - 47.6
650	750/800	36AL	635CAT	1.845" - 1.965"	46.9 - 49.9
700/750	900	38AL	635CAU	1.935" - 2.055"	49.2 - 52.2
800	900	39AL	635CAV	2.025" - 2.145"	51.4 - 54.5
900	1000	40AL			
1000	---	41AL			
1250	---	44AL			

Shear Bolt Connector		
Connector Code	Conductor Range	Stranding
SB1	#2 - 250	Stranded and compressed
SB2	4/0 - 450	Stranded and compressed
SB3	350 - 750	Stranded and compressed
SB4	750 - 1250	Stranded and compressed



3M Electrical Markets Division
13011 McCallen Pass, Bldg C
Austin, TX 78753 800.245.3573
FAX 800 245 0329
3M.com/Electrical

Important Notice: Before using this product, you must evaluate it and determine if it is suitable for your intended application. You assume all risks and liability associated with such use.

Warranty: Limited Remedy; Limited Liability: **This product will be free from defects in material and manufacture at the time of purchase.** 3M MAKES NO OTHER WARRANTIES INCLUDING, BUT NOT LIMITED TO, ANY IMPLIED WARRANTY OF MERCHANTABILITY OR FITNESS FOR A PARTICULAR PURPOSE. If this product is defective within the warranty period stated above, your exclusive remedy shall be, at 3M's option, to replace or repair the 3M product or refund the purchase price of the 3M product. Except where prohibited by law, 3M will not be liable for any direct, indirect, special, incidental or consequential loss or damage arising from this 3M product, regardless of the legal theory asserted.

3M and 3M Science. Applied to Life. are trademarks of 3M Company. © 2020 3M. All rights reserved. 80-6016-0920-1